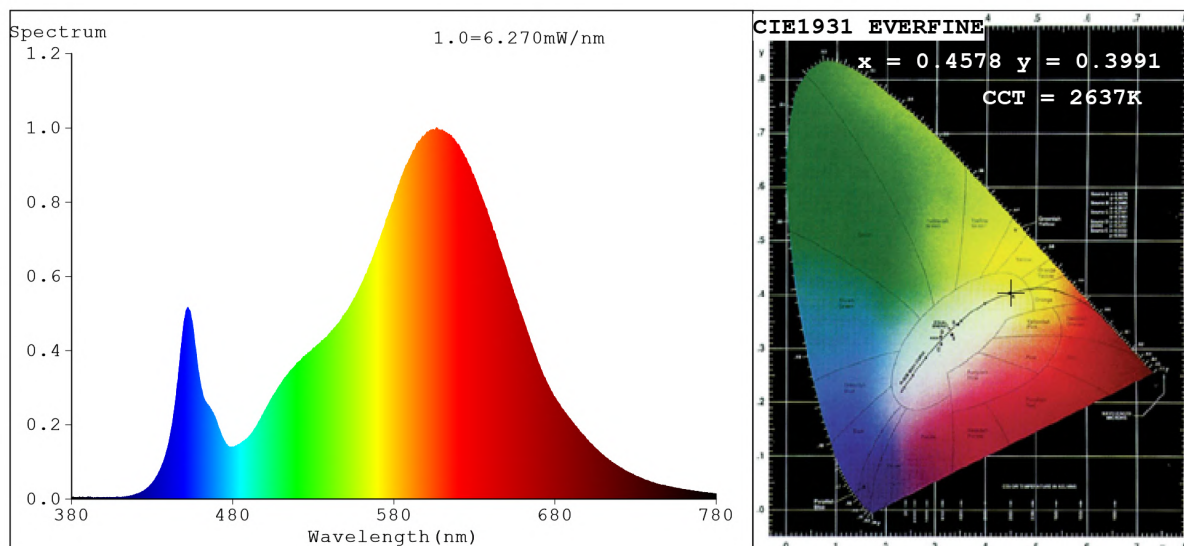


Spectrum Test Report



Color Parameters:

Chromaticity Coordinate: $x=0.4578$ $y=0.3991$ $u'=0.2665$ $v'=0.5226$
 CCT=2637K (Duv=-0.0042) Dominant WL: $\lambda_d = 586.0\text{nm}$ Purity=57.2%
 Ratio: R=25.8% G=71.9% B=2.2%; Peak WL: $\lambda_p = 606.5\text{nm}$ FWHM=109.2nm
 Render Index: Ra=81.7 CRI=77.3 TM30: Rf=79 Rg=98 Lav=596.4nm
 R1 =81 R2 =93 R3 =93 R4 =79 R5 =82 R6 =92 R7 =79
 R8 =55 R9 =7 R10=84 R11=78 R12=78 R13=84 R14=97 R15=74

Photo Parameters:

Flux = 276.5 lm Eff. : 27.46 lm/W Fe = 864.9 mW Scotopic: 334.9 S/P: 1.2113

Electrical parameters:

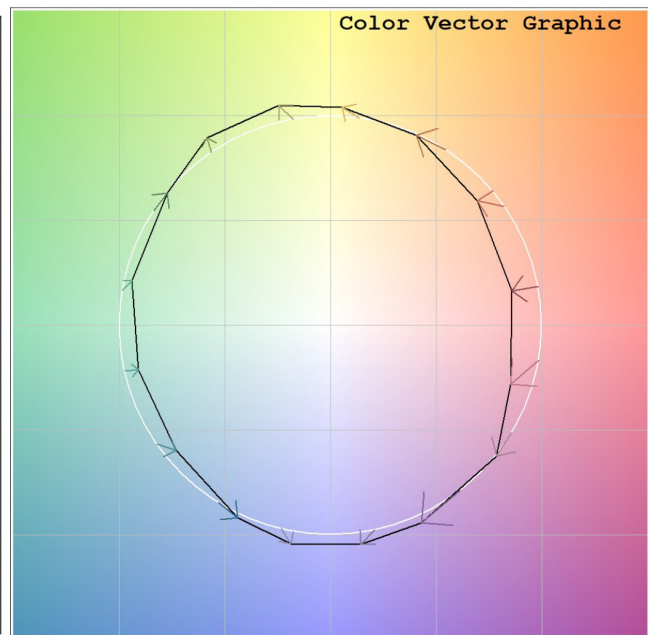
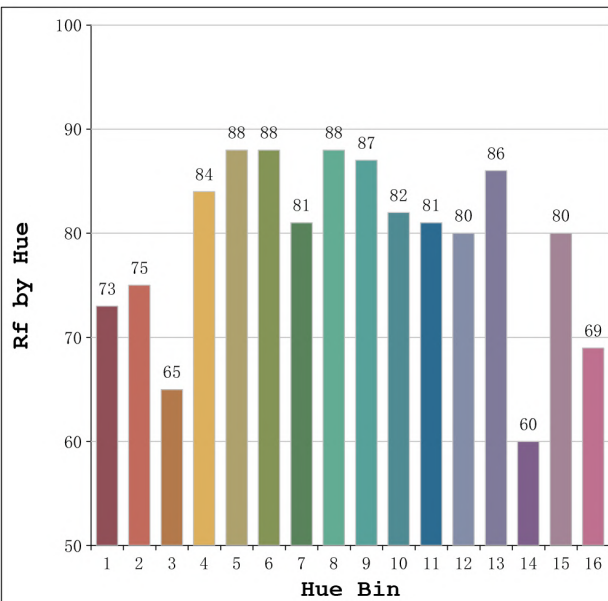
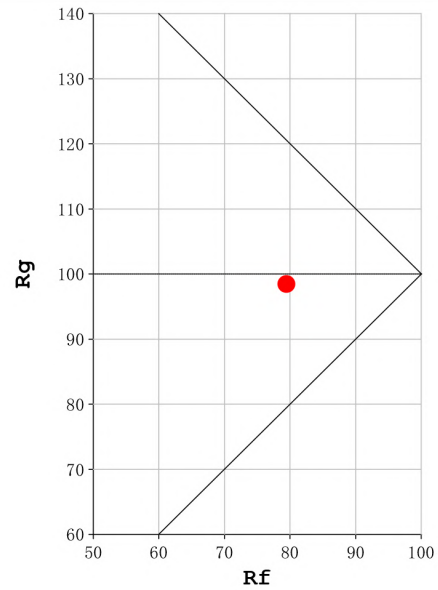
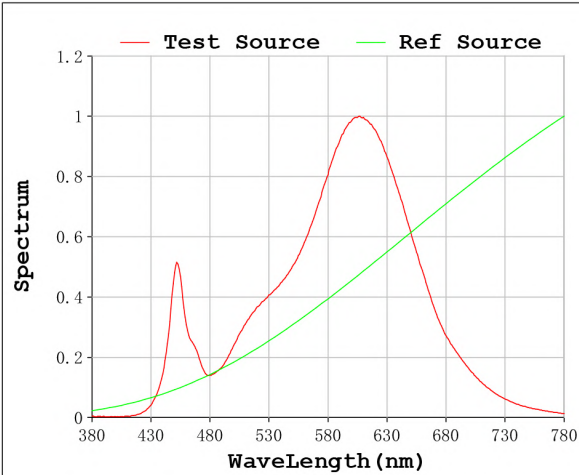
V = 23.998 V I = 0.4195 A P = 10.07 W PF = 1.000

Status: Integral T = 4119 ms Ip = 51759 (79%)

Model: Neón Sing 2700K
 Tester: Sergio Carneros
 Temperature: 27Deg
 Manufacturer: Luz Negra

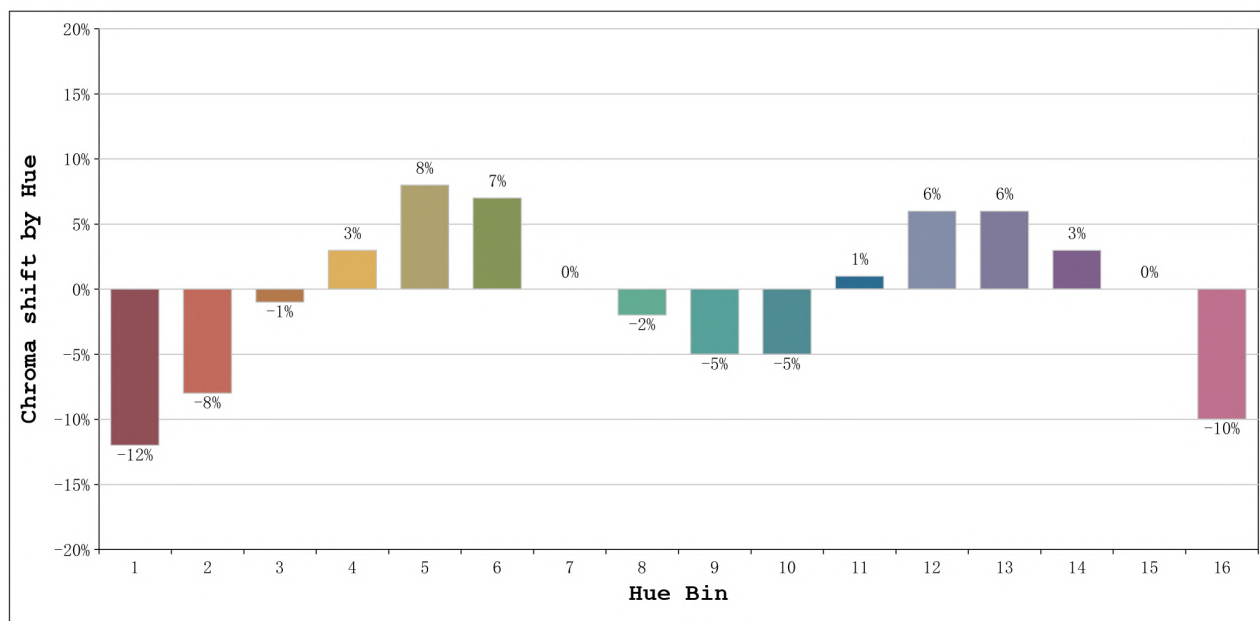
Number: 10.257
 Date: 2023-11-30 09:34:03
 Humidity: 35%
 Remarks: Neón de 100cm

Rf: 79 **CCT: 2637 K** **u': 0.2665**
Rg: 98 **Duv: -0.0042** **v': 0.5226**



Model:Neón Sing 2700K
 Tester:Sergio Carneros
 Temperature:27Deg
 Manufacturer:Luz Negra

Number: 10.257
 Date:2023-11-30 09:34:03
 Humidity:35%
 Remarks:Neón de 100cm



Hue Bin	Hue Angle	Rf	Graphic shift(%)	
			Chroma	Hue
1	0.0° - 22.5°	73	-12	0
2	22.5° - 45.0°	75	-8	9
3	45.0° - 67.5°	65	-1	16
4	67.5° - 90.0°	84	3	9
5	90.0° - 112.5°	88	8	5
6	112.5° - 135.0°	88	7	-1
7	135.0° - 157.5°	81	0	-9
8	157.5° - 180.0°	88	-2	-4
9	180.0° - 202.5°	87	-5	1
10	202.5° - 225.0°	82	-5	8
11	225.0° - 247.5°	81	1	12
12	247.5° - 270.0°	80	6	6
13	270.0° - 292.5°	86	6	-7
14	292.5° - 315.0°	60	3	-23
15	315.0° - 337.5°	80	0	-12
16	337.5° - 360.0°	69	-10	-13

Model:Neón Sing 2700K
Tester:Sergio Carneros
Temperature:27Deg
Manufacturer:Luz Negra

Number: 10.257
Date:2023-11-30 09:34:03
Humidity:35%
Remarks:Neón de 100cm